

PART OF N.E. 1/4 OF SEC 13, T.6N., R.1E., S.L.B. & M.

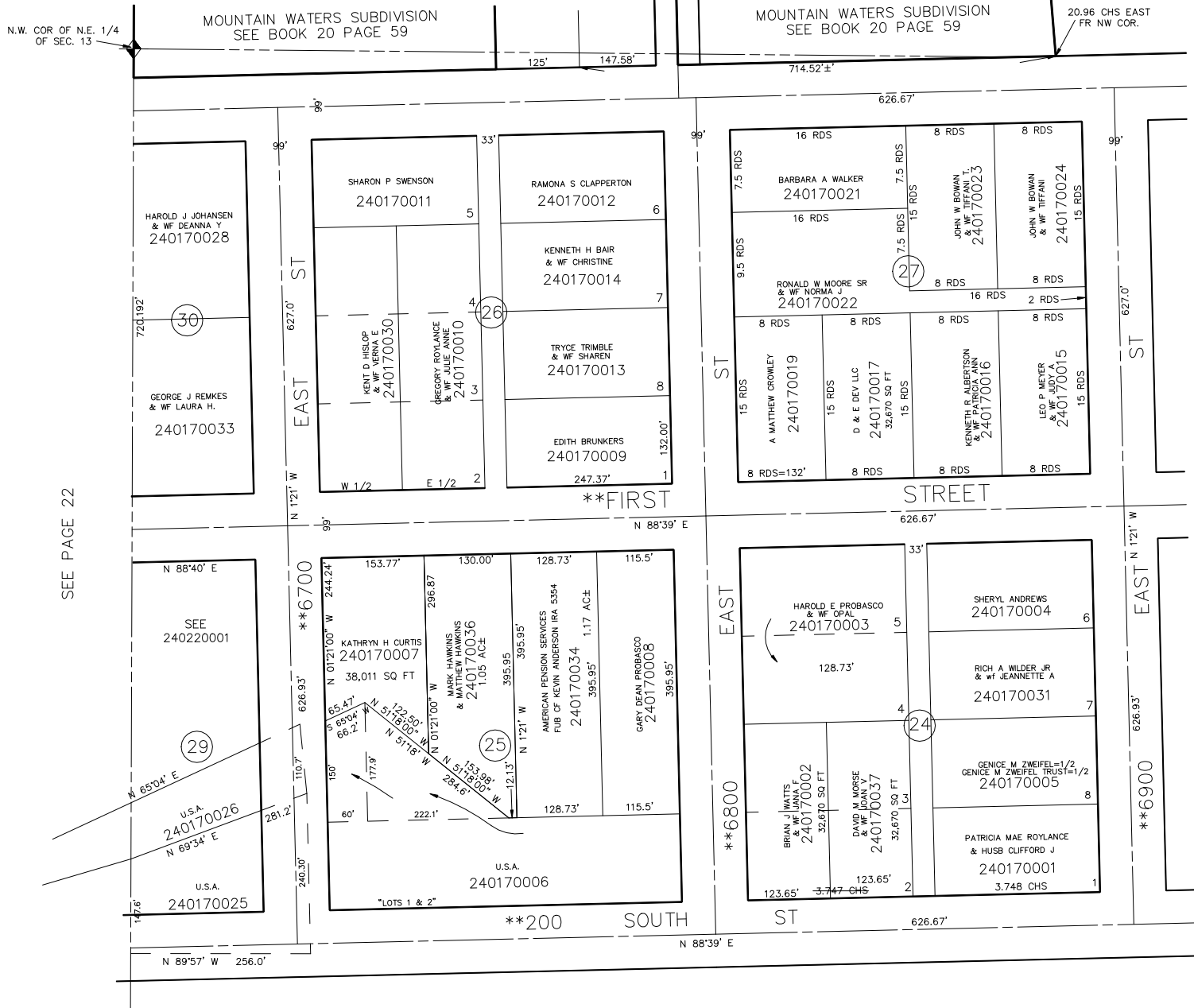
HUNTSVILLE SURVEY

BLOCKS 24 TO 27, 29 & 30, PLAT A

TAXING UNIT: 35

SCALE 1" = 120'

SEE BOOK 20, PAGE 10



N.W. COR OF N.E. 1/4 OF SEC. 13

MOUNTAIN WATERS SUBDIVISION SEE BOOK 20 PAGE 59

MOUNTAIN WATERS SUBDIVISION SEE BOOK 20 PAGE 59

20.96 CHS EAST FR NW COR.

SEE PAGE 22

SEE PAGE 16

SEE PAGE 21

*NOTE: STREET NUMBERS ACCORDING TO COUNTY SURVEYOR

**STREET NAME CHANGE SEE E#2195484